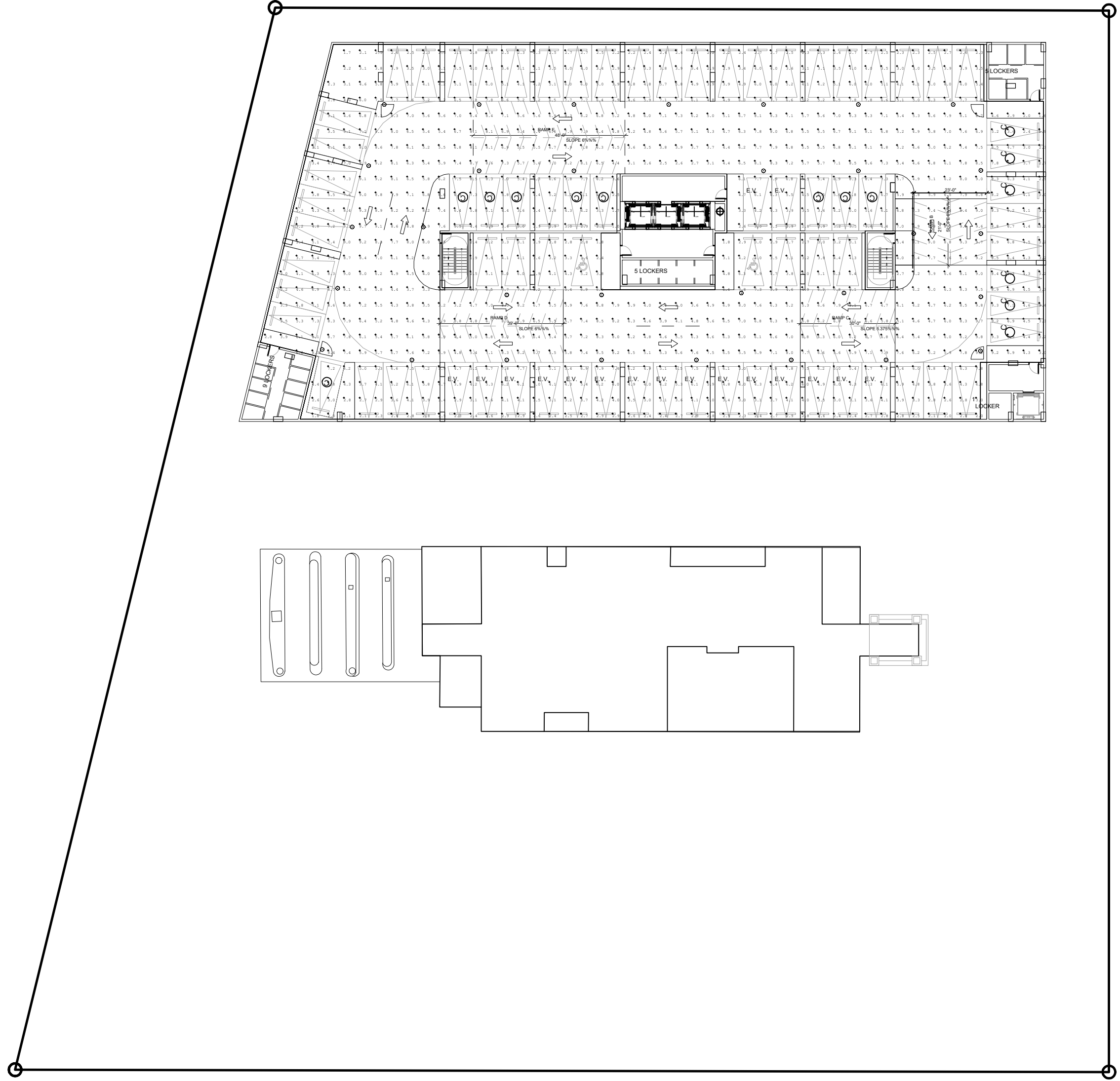


| Calculation Summary | | | | | | | | |
|----------------------|-------------|-------|------|------|------|---------|---------|--|
| Label | ColType | Units | Avg | Max | Min | Avg/Min | Max/Min | |
| Parking Garage Floor | Illuminance | FC | 12.4 | 12.3 | 12.0 | 1.03 | 1.03 | |

| Luminaire Schedule | | | | | | | | |
|--------------------|-----|-------|-------------|---|-------|---------------------|--------------------|----------------|
| Symbol | Qty | Label | Arrangement | Description | LF | Luminaire Lumens | Luminaire Watts | Total Watts |
| ○ | 13 | 01 | Single | Utopia Lighting LRC-30-SLED-40K-UVV-W8 | 0.900 | 4810 | 37 | 481 |
| ○ | 18 | 01E | Single | Utopia Lighting LRC-30-SLED-40K-UVV-W8 (Connected to Generator) | 0.900 | 4810 | 37 | 666 |



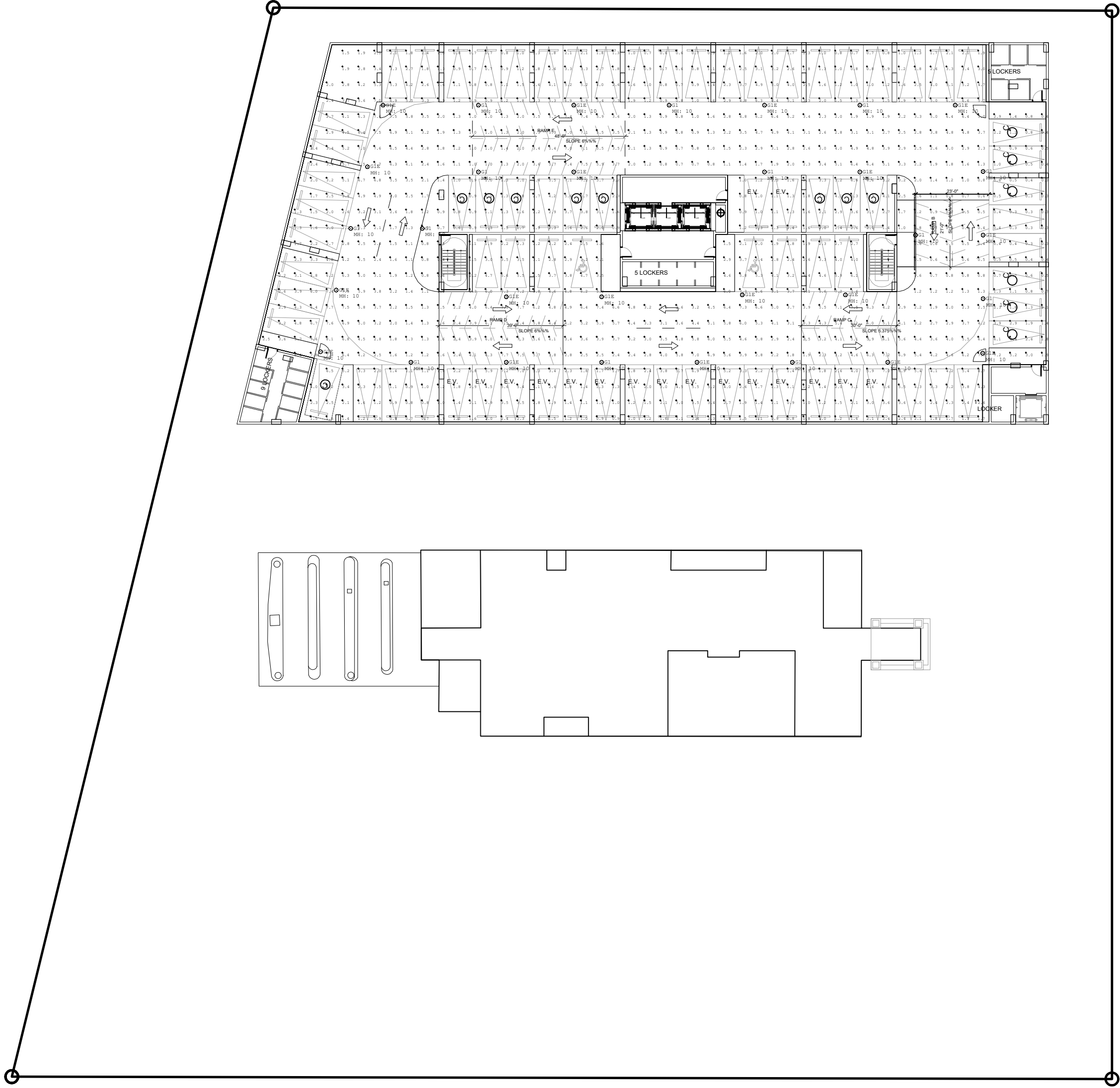
LEVEL 02
PHOTOMETRICS - NORMAL
SCALE: 1"= 30'-0"

PZB

PZ24- 12000027
12/17/2025

| Calculation Summary | | | | | | | | |
|----------------------|-------------|-------|------|------|------|---------|---------|--|
| Label | ColType | Units | Avg | Max | Min | Avg/Min | Max/Min | |
| Parking Garage Floor | Illuminance | FC | 12.3 | 12.3 | 12.3 | 1.00 | 1.00 | |

| Luminaire Schedule | | | | | | | | |
|--------------------|-----|-------|-------------|---|-------|---------------------|--------------------|----------------|
| Symbol | Qty | Label | Arrangement | Description | LF | Luminaire Lumens | Luminaire Watts | Total Watts |
| ○ | 13 | 01 | Single | Utopia Lighting LRC-30-SLED-40K-UVV-W8 | 0.900 | 4810 | 37 | 481 |
| ○ | 18 | 01E | Single | Utopia Lighting LRC-30-SLED-40K-UVV-W8 (Connected to Generator) | 0.900 | 4810 | 37 | 666 |



LEVEL 02
PHOTOMETRICS - EMERGENCY
SCALE: 1"= 30'-0"

PZB

PZ24- 12000027
11/19/2025

idea
Architect

absolute-idea.com

CANAL PARK
3523 NE 163rd Street, Suite 200 North Miami Beach, FL 33160
T 305.792.0015 T 305.931.0279 @info@absolute-idea.com

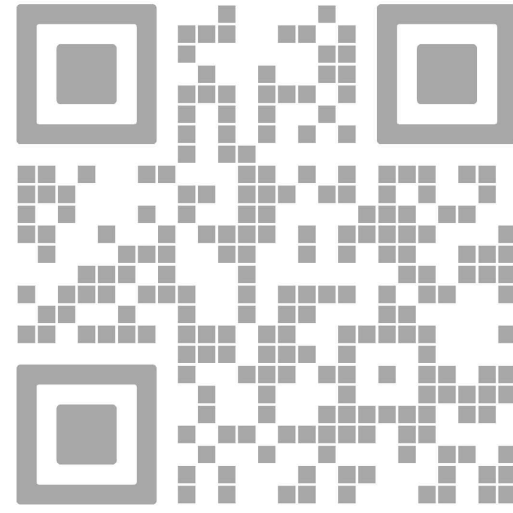
SEAL

TO THE BEST OF MY KNOWLEDGE, THE PLANS AND SPECIFICATIONS COMPLY WITH THE APPLICABLE MINIMUM BUILDING CODES AND THE APPLICABLE FIRE-SAFETY STANDARDS AS DETERMINED BY THE LOCAL AUTHORITY IN ACCORDANCE WITH THIS SECTION AND 633 FLORIDA STATUTES.

STEPHANE L'ECUYER
AR 93637

STATE OF FLORIDA
STEPHANE L'ECUYER
AR93637
REGISTERED ARCHITECT

ISSUE FOR:
DRC SUBMITTAL



| REV. | DATE | DESCRIPTION |
|------|------------|---------------|
| 01 | 05-13-2025 | DRC SUBMITTAL |
| | | |
| | | |
| | | |
| | | |

ALL MEASUREMENTS MUST BE VERIFIED BEFORE BEGINNING THE WORKS. NO MEASUREMENTS ARE TO BE SCALED DIRECTLY FROM THIS DRAWING.

Key section

Client
VERA FUND
NICK POLYUSHKIN
& YURI KHARITONENKOV
TEL: 305.833.3303

Project
**1600 S FEDERAL HIGHWAY
(MIXED-USE PROJECT)**
1600 SOUTH FEDERAL HIGHWAY,
POMPANO BEACH, FL 33062

| Title | |
|----------------------------|--------------------------|
| LEVEL 02 PHOTOMETRICS | |
| Drawn J. WU | Field ARCHITECTURE |
| Revised N. TREMBLAY | Scale as shown |
| Approved S. L'ECUYER | Date 08-15-2025 |
| Project J. WU 24-838 | Dwg. no. P-003 |